

FEATURES AND SPECIFICATIONS

Features and Benefits

- Small footprint saves PCB real estate
- Metal shell with back-shield offers all-round EMI/RFI shielding
- Staked-housing provides excellent solder tail alignment facilitating PCB mounting
- Dimples at inlet serve as locking feature and plug retention
- Panel grounding pins for ESD protection
- Kinked boardlocks provide strong board retention

Reference Information

Product Specification: PS-89485
 Packaging: Tray
 Mates With: USB 'A' Plug
 Designed In: Millimeters

Electrical

Voltage: 30V
 Current: 1.0A
 Contact Resistance: 30mΩ max.
 Dielectric Withstanding Voltage: 750V AC
 Insulation Resistance: 1000 MΩ min.

Mechanical

Mating Force: 35N max.
 Withdrawal Force: 10N min.
 Durability: 1500 cycles

Physical

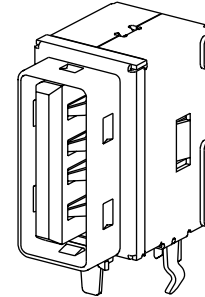
Housing: Black high-temperature, glass fiber-filled nylon, UL 94V-0
 Contact: Phosphor Bronze
 Metal Shell: Steel Alloy
 Plating: Gold Flash/Gold 30μm
 Operating Temperature: 0 to +40°C



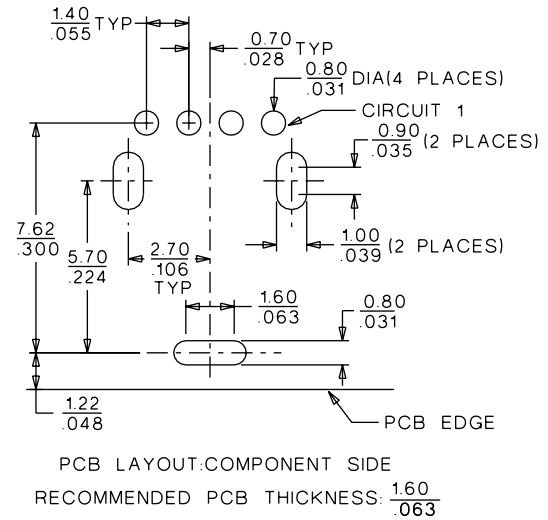
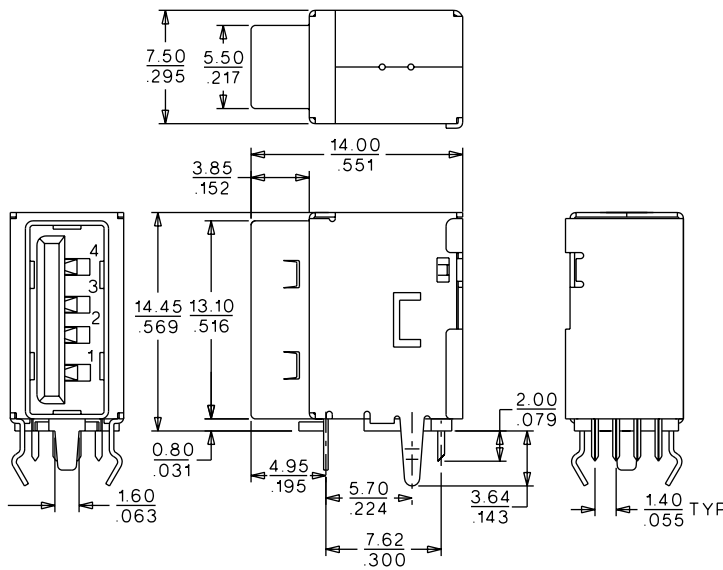
Universal Serial Bus (USB) Shielded I/O Type 'A' Receptacle

89485

Single Upright Right Angle



CATALOG DRAWING (FOR REFERENCE ONLY)



ORDERING INFORMATION

Circuits	Order No.	Plating
4	89485-0000	Gold Flash
	89485-0001	30μm Gold

I/O Connectors

