

Design Idea DI-7

TinySwitchTM

TV Standby



Application	Device	Power Output	Input Voltage	Output Voltage	Topology
TV Standby	TNY253	1.3 W	120 - 375 VDC	7.5 V \pm 5%	Flyback

Design Highlights

- Very low power consumption at no load (< 100 mW @ 375 VDC input)
- Lowest cost, lowest component count solution
- High efficiency
- Glitch free turn on and turn off
- Meets very low video noise requirements
- Small physical size (38 mm×24 mm×14.2 mm, W×L×H)
- Simple, two winding transformer

Operation

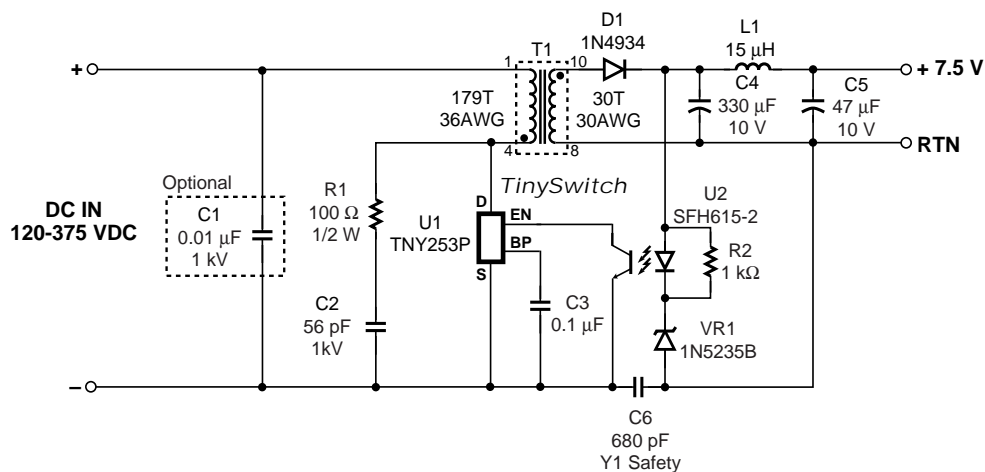
The *TinySwitch* TV standby power supply generates an isolated output voltage from a high voltage DC input. The circuit is designed to replace conventional linear supplies and self oscillating ringing choke converters (RCC) at lower cost and component count. There is no need for external under voltage lockout (UVLO) since the turn on and turn off are monotonic and glitch-free, (Figures 2 and 3).

The example shown delivers 7.5V at 0.18 A. Input voltage

range is 120 - 375 VDC. Input bypass capacitor C1 is needed only if the main supply filter capacitor is located far away. C3 is the *TinySwitch* bypass capacitor. C6 may also be eliminated in the final application depending on the layout of the main power supply.

The ON/OFF control on the *TinySwitch* scales the switching losses with load allowing the use of simple RC (R1 and C2) snubber to clamp the drain voltage at these power levels. The snubber also reduces EMI and video noise.

The secondary winding of T1 is rectified and filtered by D1 and C4 to provide 7.5 V output. The output LC filter, L1 and C5, provide additional filtering for the 7.5 V output. The output voltage is directly sensed by optocoupler U2 and Zener diode VR1. The output voltage is determined by the voltage drop across the Zener diode and optocoupler LED. Due to the digital ON/OFF control of the *TinySwitch*, the current transfer ratio (CTR) of the optocoupler is not critical and a low cost ungraded optocoupler can be used. T1 is designed for discontinuous conduction mode. The transformer parameters are shown in Table 1.



PI-2205-100198

Figure 1. *TinySwitch* 1.3 W TV Standby Supply.

Key Design Points

- Design transformer for discontinuous mode operation.
- Select RC snubber circuit components, R1 and C2, to guarantee the peak DRAIN voltage will be less than 650 V. The maximum value of C2 is 56 pF. This snubber capacitor can be increased if the primary and secondary windings are separated with tape.
- Select the rectifier D1 whose average current rating is higher than the output short circuit current.

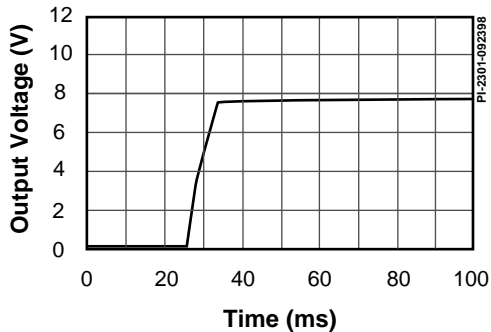


Figure 2. Output Turn On Voltage Waveform.

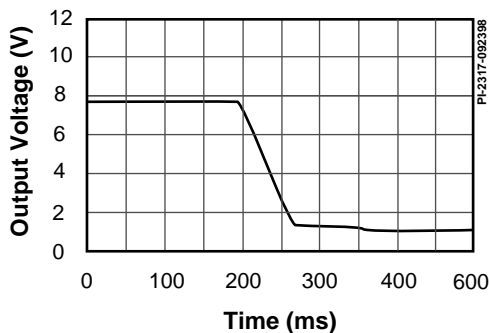


Figure 3. Output Turn Off Voltage Waveform.

Transformer Parameters	
Core Material	TDK PC40EE16-Z or equiv. Gap for A_L of 159 mH/T ²
Bobbin	Ying Chin YC1607
Winding Order	Primary (4-1), Secondary (10-8) [triple insulated secondary]
Primary Inductance (Pins 1-4 all others open)	5.1 mH \pm 10% @ 44 kHz
Primary Resonant Frequency (Pins 1-4, all others open)	400 kHz minimum
Leakage Inductance (Pins 1-4, with Pins 8-10 shorted)	150 μ H maximum

Table 1. Transformer Design Parameters.

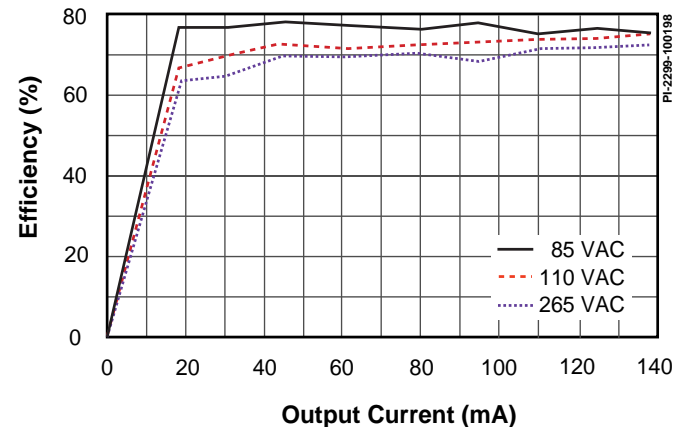


Figure 4. Efficiency vs. Output Load at 7.5 VDC.

For the latest updates, visit our website: www.powerint.com

Power Integrations reserves the right to make changes to its products at any time to improve reliability or manufacturability. Power Integrations does not assume any liability arising from the use of any device or circuit described herein, nor does it convey any license under its patent rights or the rights of others.

PI Logo and *TOPSwitch* are registered trademarks of Power Integrations, Inc.

©Copyright 1998, Power Integrations, Inc. 477 N. Mathilda Avenue, Sunnyvale, CA 94086

WORLD HEADQUARTERS

Power Integrations, Inc.
477 N. Mathilda Avenue
Sunnyvale, CA 94086 USA
Phone: +1•408•523•9265
Fax: +1•408•523•9365

AMERICAS - EAST

Power Integrations
Marietta, Georgia
Phone: +1•770•424•5152
Fax: +1•770•424•6567

EUROPE & AFRICA

Power Integrations (Europe) Ltd.
United Kingdom
Phone: +44•1753•622•208
Fax: +44•1753•622•209

TAIWAN

Power Integrations International
Taipei
Phone: +886•2•2727•1221
Fax: +886•2•2727•1223

KOREA

Power Integrations International
Seoul
Phone: +82•2•568•7520
Fax: +82•2•568•7474

JAPAN

Power Integrations, K.K.
Yokohama-shi
Phone: +81•45•471•1021
Fax: +81•45•471•3717

INDIA (Technical Support)

Innovatech
Bangalore
Phone: +91•80•226•6023
Fax: +91•80•228•2191