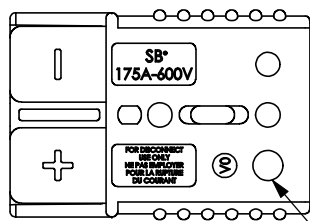
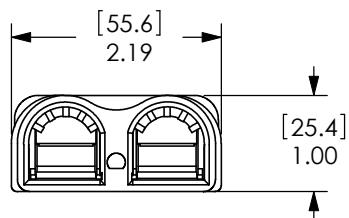
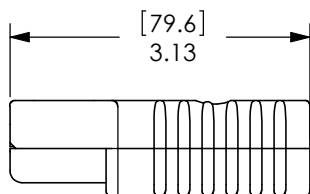
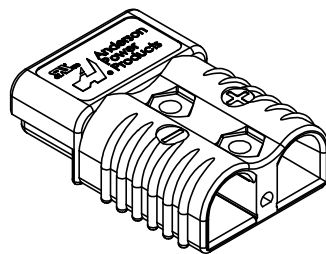
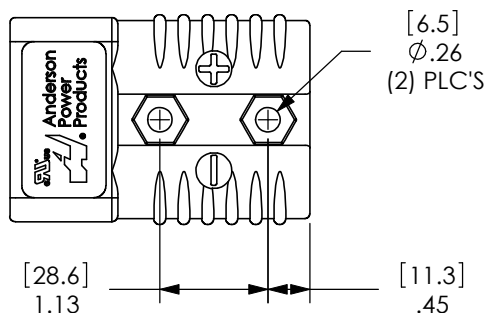


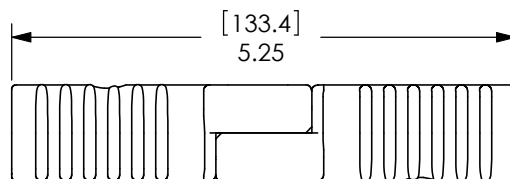
THE INFORMATION CONTAINED IN THIS DRAWING IS THE SOLE PROPERTY OF ANDERSON POWER PRODUCTS. ANY REPRODUCTION IN PART OR WHOLE WITHOUT THE WRITTEN PERMISSION OF ANDERSON POWER PRODUCTS IS PROHIBITED.

Copyright 2009

ANDERSON POWER PRODUCTS RESERVES THE RIGHT TO ALTER PRODUCT TYPES, THEIR TECHNICAL DATA, DIMENSION, STYLE AND ACCESSORIES WITHOUT PRIOR NOTIFICATION.



SEE TABLE FOR RAISED TEXT



MATED PAIR

COLOR	P/N	MAT'L	TEXT
GRAY	940	PC	BLANK
	P940	PC/PBT	"P"
BLUE	941	PC	BLANK
	P941	PC/PBT	"P"
ORANGE	942	PC	BLANK
	P942	PC/PBT	"P"
YELLOW	943	PC	BLANK
	P943	PC/PBT	"P"
RED	949	PC	BLANK
	P949	PC/PBT	"P"
**BLACK	2-7252G11	PC	BLANK
"KEYLESS"	P2-7252G11	PC/PBT	"P"
BROWN	950	PC	BLANK
	P950	PC/PBT	"P"

NOTES:

1. SPRING/HOUSING ASSEMBLIES ARE UL RECOGNIZED PER FILE E26226, CSA CERTIFIED PER LR25154
2. HOUSINGS ARE KEyed TO ONLY ALLOW MATING WITH THE SAME COLOR HOUSING.
3. FOR ASSEMBLY INSTRUCTIONS SEE DOCUMENT 1S1030A
4. HOUSING ASSEMBLIES ACCOMODATE ANDERSON CONTACTS FOR WIRE RANGE FROM #10 AWG TO 1/0.
5. **BLACK "KEYLESS" CONNECTOR WILL MATE WITH ALL VOLTAGE KEYS AND COLORS

DIMENSIONS ARE IN:	INCH[MM]
UNLESS OTHERWISE STATED	
TOLERANCES:	
DECIMALS (INCH)	DECIMALS (MM) ANGLES
.XX ±.02	.X ±.5 ±2°
SURFACE FINISH:	
MACHINED	128 [3.2] ✓
MOLDED	64 [1.6] ✓
MATERIAL: SPRINGS - STAINLESS STEEL HOUSINGS - SEE TABLE	
FINISH:	

APPROVALS	
DRAWN	CMS 03/18/99
CHECKED	DJD 03/19/99
MFG APP	CHB 04/19/99
QC APP	DJM 04/20/99
ENG APP	UFN 04/20/99

ANDERSON POWER PRODUCTS

175A DUAL POLE SPRING & HOUSING

SIZE: A/A4 DWG NO. 114131S1 REV. 3

REV.	DESCRIPTION	APPRV	DATE
3	ECRN 14661: "PC/PBT" WAS "PBT"	CMS	7/7/10
2	ECRN 14391- REDRAW UPDATE BORDER ADD TABLE	AMS	3/3/09

REVISIONS			
-----------	--	--	--

3rd ANGLE PROJECTION	-CAD GENERATED DRAWING- DO NOT MANUALLY UPDATE DO NOT SCALE	SCALE: NONE	CADFILE: 01001	SHEET: 1 OF 1
----------------------	---	-------------	----------------	---------------