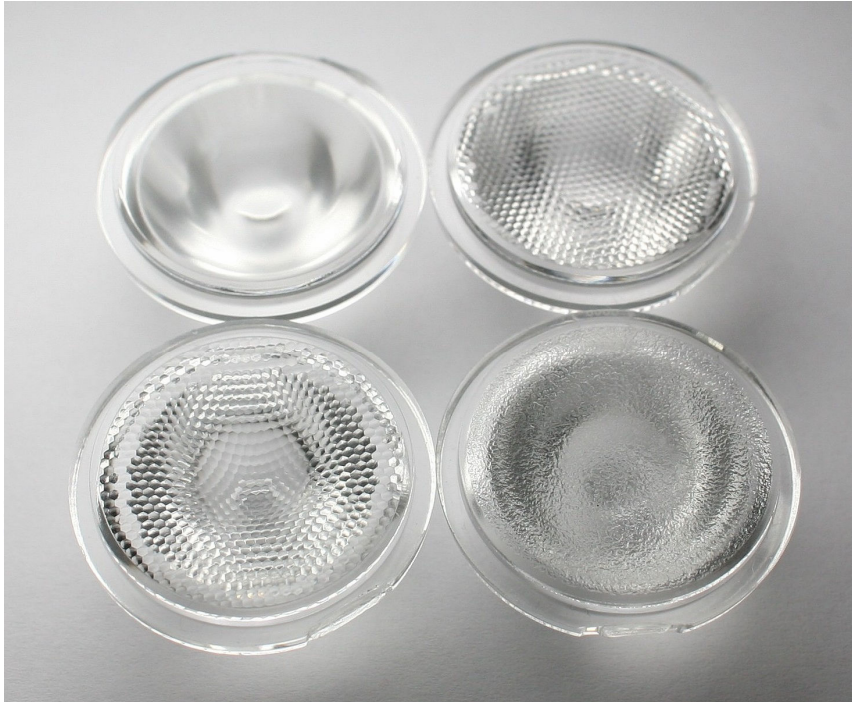


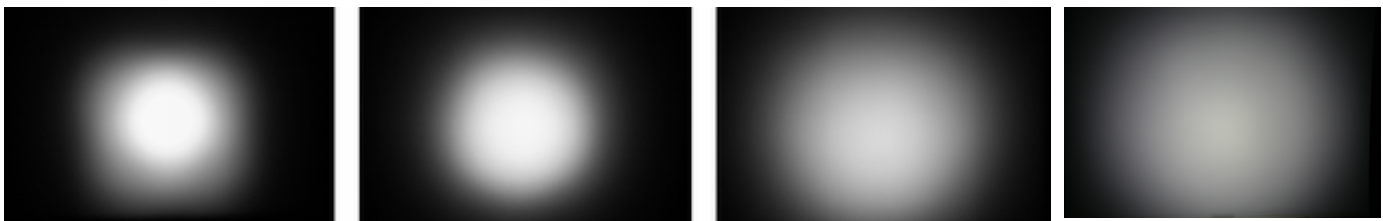
Eva-MC lenses for Cree's MC-E series of LEDs



- Specially designed for Cree's MC-E series of LEDs.
- Special care taken to make a uniform white or warm white illumination. Lenses work well with other colors, too.
- Lens material optical grade PMMA. Allows use of high current and temperature conditions
- Best available optical efficiency, up to 90%.

LENS TYPES

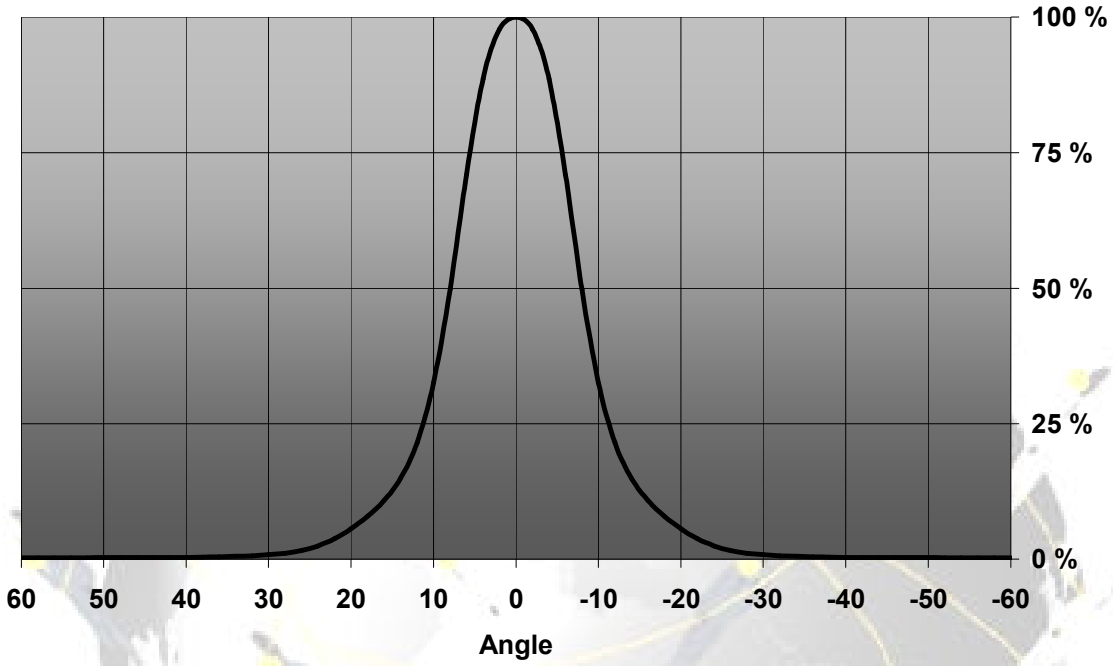
| NAME | ORDERING CODE | FWHM Angle |
|-----------------|------------------|------------|
| Eva-MC Diffuser | C10684_Eva-MC-D | ±8° |
| Eva-MC Medium | C10685_Eva-MC-M | ±11° |
| Eva-MC Wide | C10686_Eva-MC-W | ±18.2° |
| Eva-MC WW | C10909_Eva-MC-WW | ±23.5° |



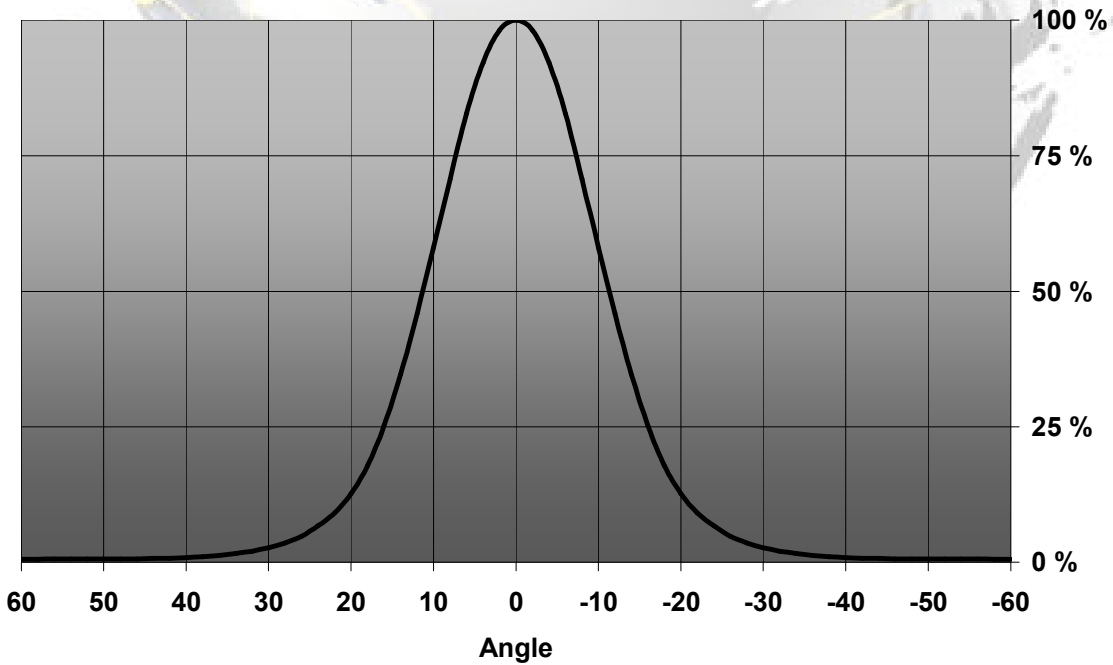
© Ledil Oy – PRELIMINARY - Subject to change without prior notice

MEASUREMENT DATA

Relative Intensity of EVA-D

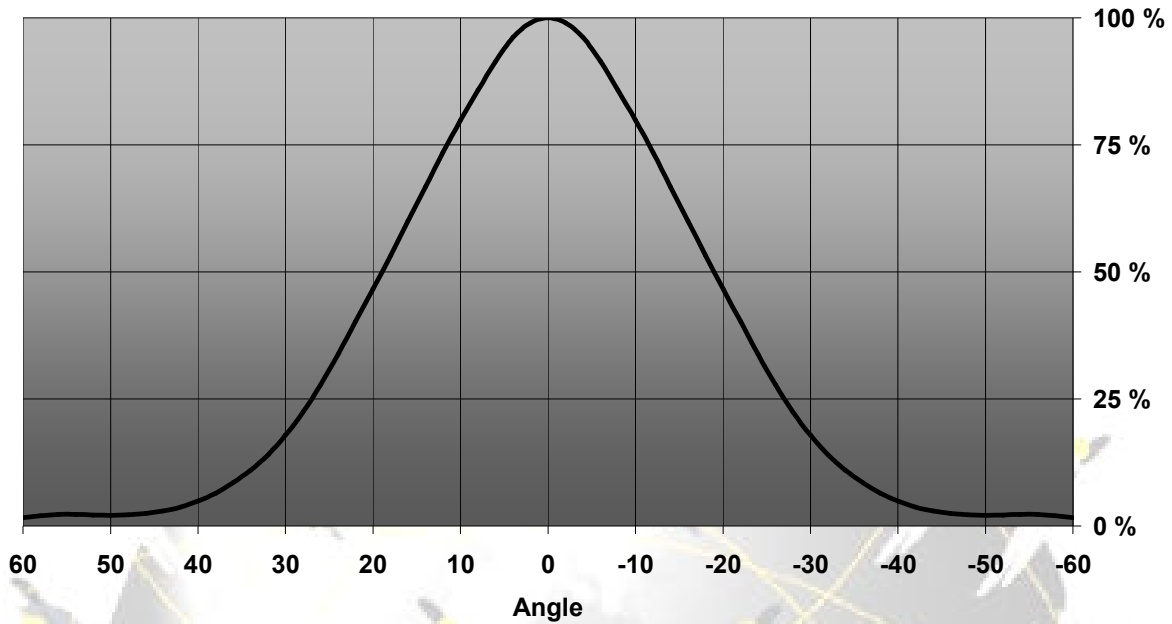


Relative Intensity of EVA-M

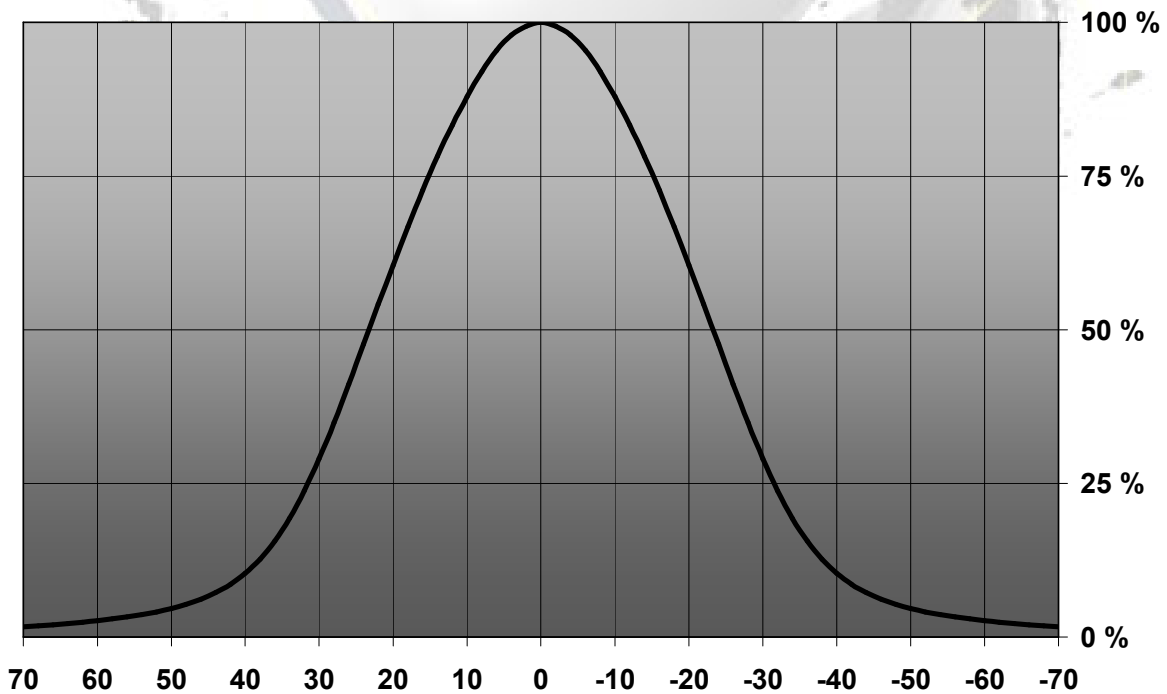


© Ledil Oy – PRELIMINARY - Subject to change without prior notice

Relative Intensity of EVA-W

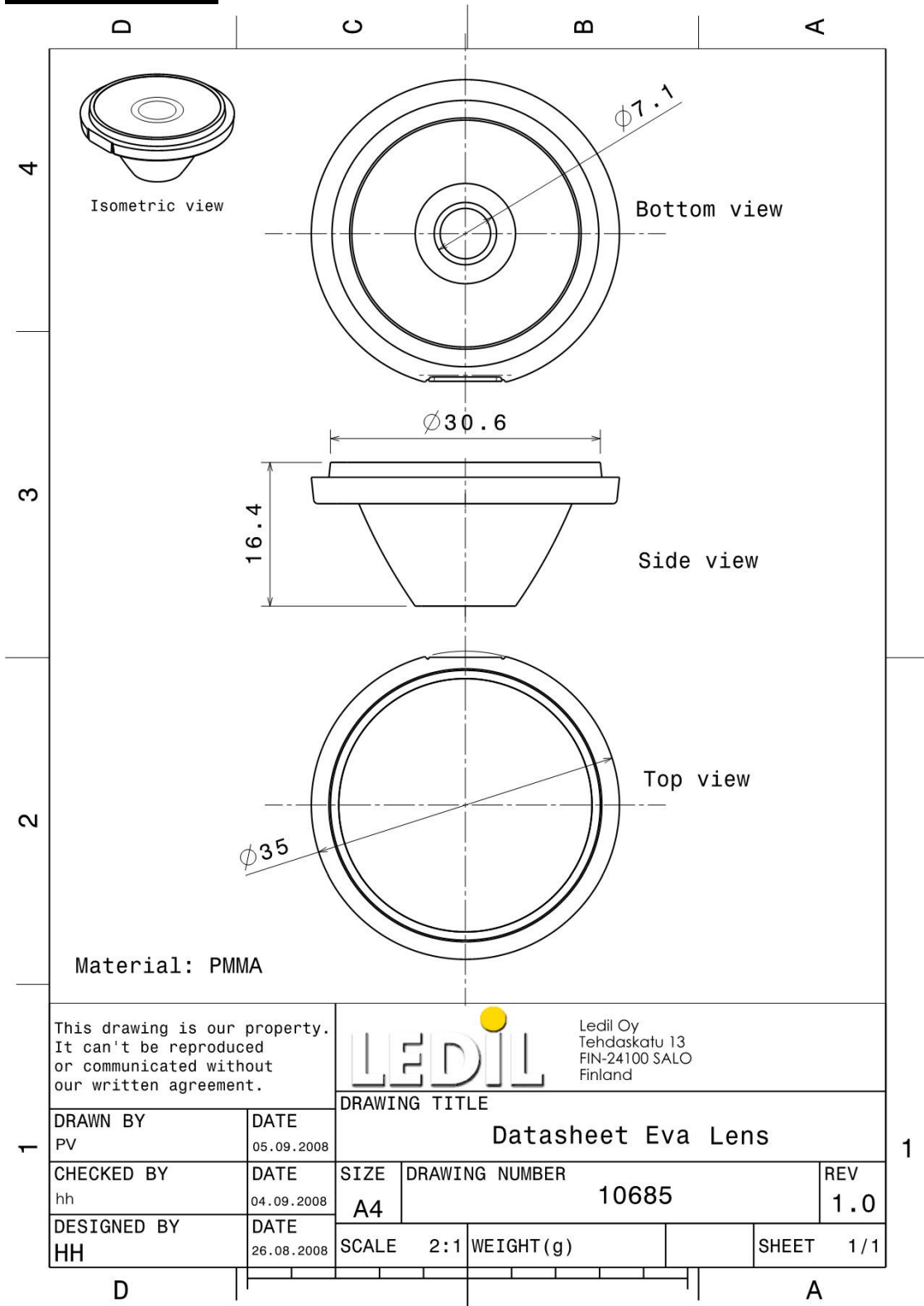


Relative Intensity of C10909_Eva-MC-WW



© Ledil Oy – PRELIMINARY - Subject to change without prior notice

DRAWINGS



© Ledil Oy - PRELIMINARY - Subject to change without prior notice