

1.7 Capteur de température LM75 en I2C, version 2

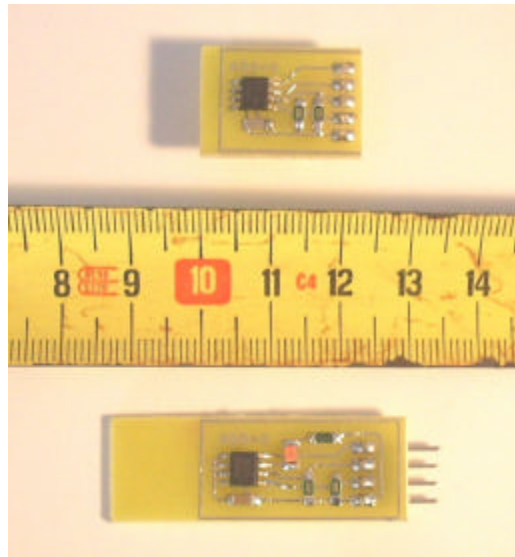


Figure 1.7. Vue de la carte électronique (images-maquettes\I2C-2-11.jpg).

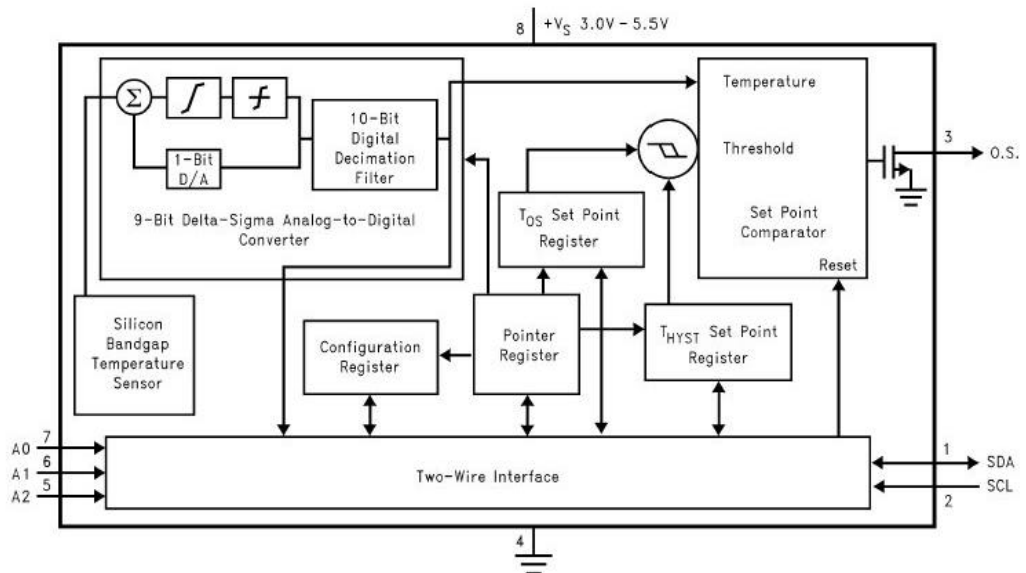


Figure 1.8. Synoptique du capteur de température I2C LM75 (images-maquettes\LM75.jpg).

1.8 Câblage du connecteur I2C 5 broches

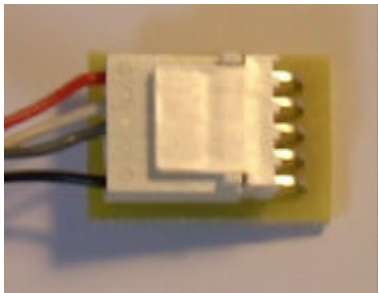
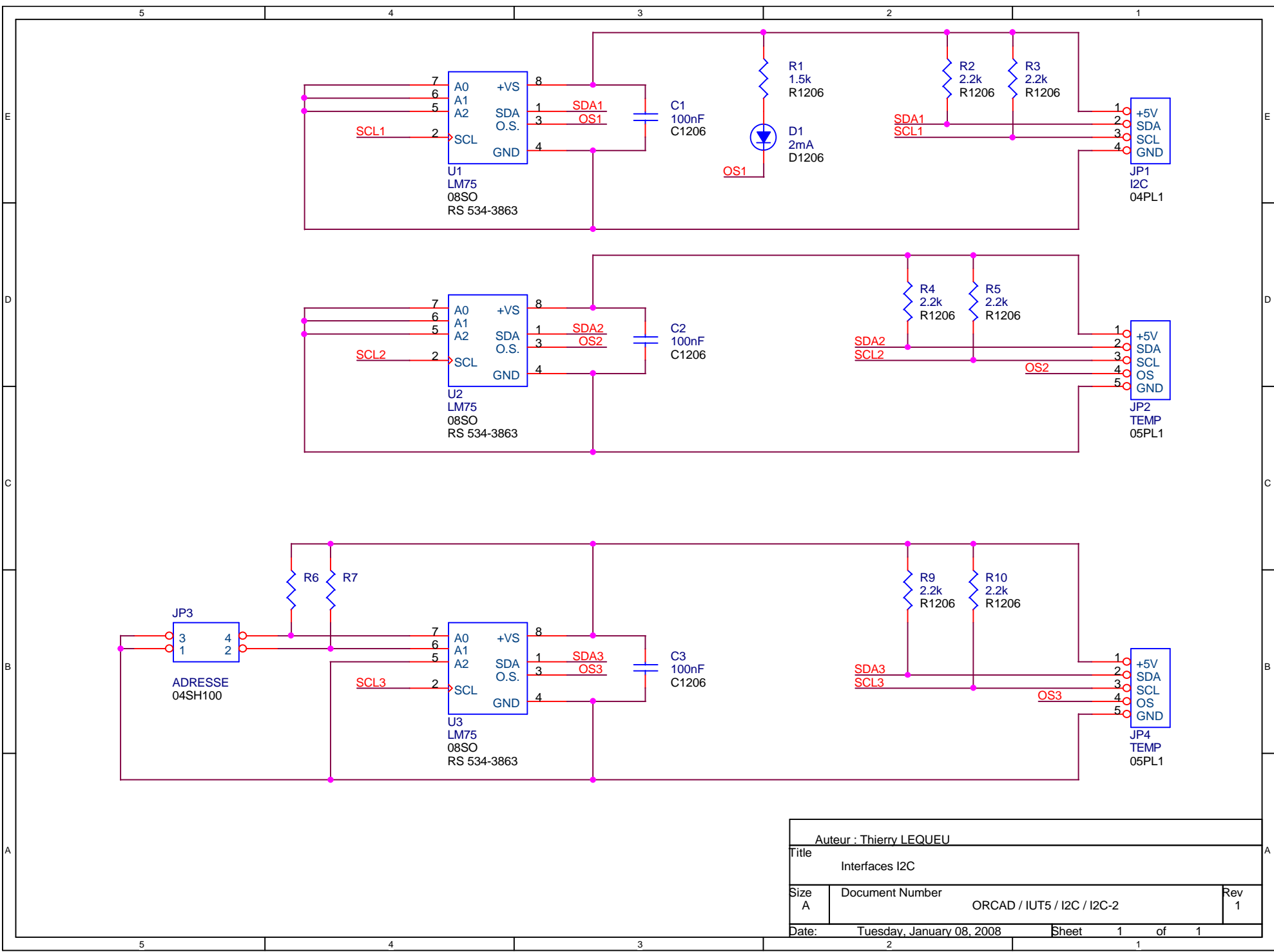
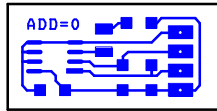
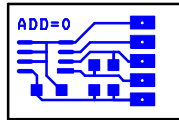
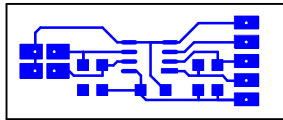


Figure 1.9. Câblage du connecteur I2C (images-maquettes\I2C-2-41.jpg).

1	+5V	Rouge
2	SDA (Port B, bit 0)	Blanc
3	SCL (Port B, bit 1)	Gris
4	O.S. (Over Temperature)	Jaune
5	Masse	Noir

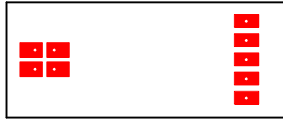


Auteur : Thierry LEQUEU		
Title Interfaces I2C		
Size A	Document Number ORCAD / IUT5 / I2C / I2C-2	Rev 1
Date: Tuesday, January 08, 2008	Sheet 1	of 1

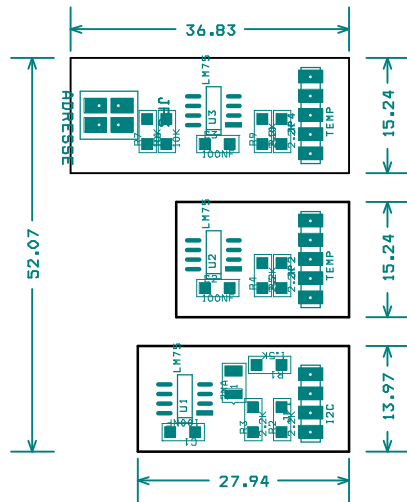


Face TOP

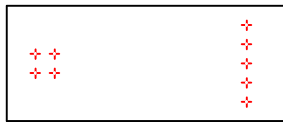
Thierry LEQUEU



Face BOT



FACE AST



FACE DRD

DRILL CHART				
SYM	DIAM	TOL	QTY	NOTE
+	0.991 mm		18	
TOTAL			18	