

Projet 11 - EZL80C / Interface RS232 pour module WIFI EZL80c.

Projet : IUT5
Info : [DIV496]
Révision : 1 du 30 mai 2006

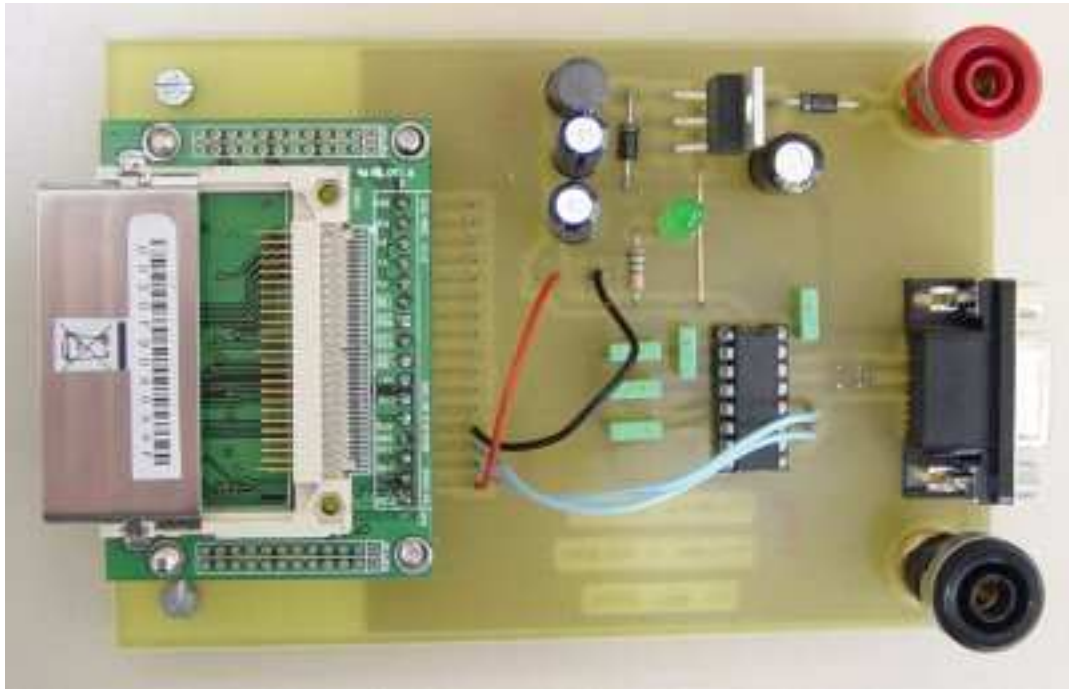


Figure 11.1. Vue de la carte électronique (images-maquettes\ezl80c-22.jpg).

11.1 Liste des documents

- Désignation des composants
- Prix du montage.
- Schéma électronique.
- Circuit imprimé coté cuivre.
- Circuit imprimé coté composants.
- Implantation des composants.
- Documentations des composants.

11.2 Désignation des composants

Tableau 11.1. Liste de composants (projets-iut5.xls / EZL80C).

N°	Quantité	Référence	Désignation	Empreinte
1	1	B1	ROUGE	EMBASE
2	1	B2	NOIRE	EMBASE
3	1	C1	220 uF 63V	RADIAL08
4	2	C2,C3	120uF 25V	RADIAL08
5	5	C4,C5,C6,C7,C8	100nF	CK06
6	1	DIV1	Modules EZL80C	EZL80C
7	1	DIV2	RX/TX	04SH100
8	2	D2,D1	11DQ04	DO41
9	1	D3	2mA	LED3
10	1	JP1	VCC	02PL1
11	1	JP2	GND	02PL1
12	1	JP3	DB9 femelle	DSUB-09-F
13	1	JP4	HEADER 16	16PL1
14	1	JP5	HEADER 2	02PL1
15	1	L1	68uH 2A	RADIAL08
16	1	R1	650	RC04
17	1	U1	LM2595T3.3	TO220-5b
18	1	U2	MAX3232	16DIP300L
19	2	VIS1,VIS2	VISSERIE	M3L

11.3 Composants annexes

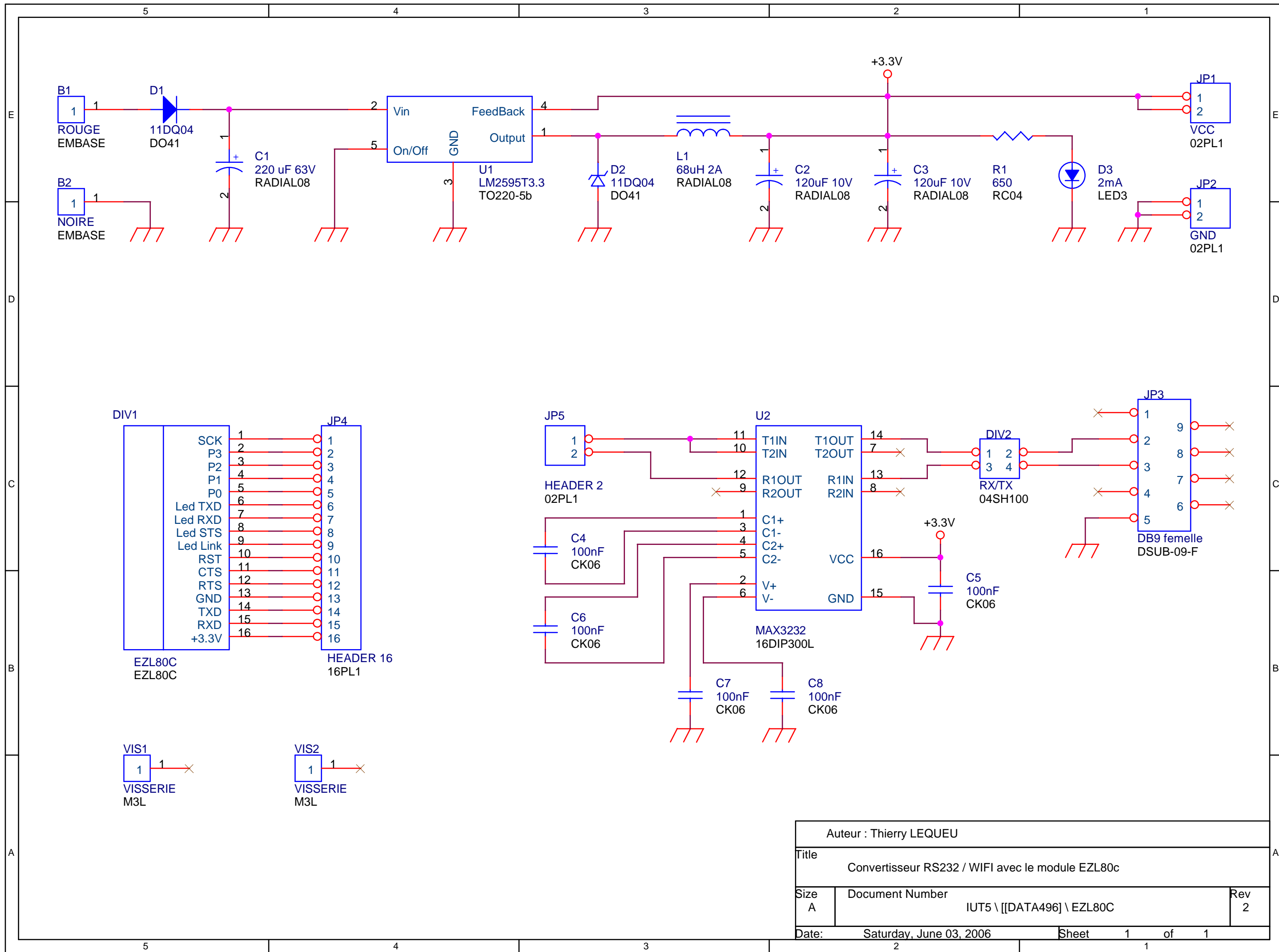


Figure 11.2. Module WIFI EZL80c (images-maquettes\ezl80c-12).

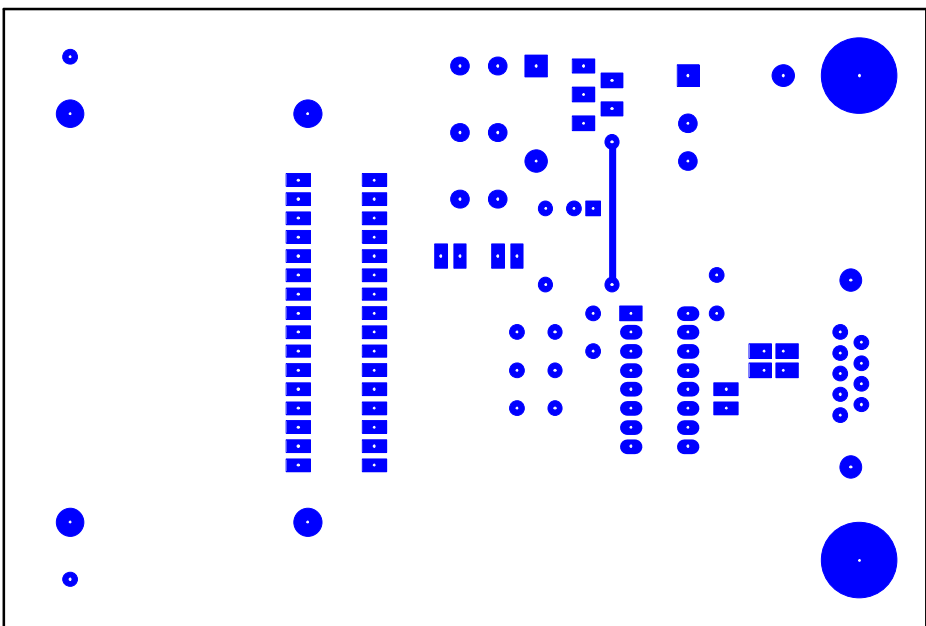
Convertisseur RS232 / WIFI avec le module EZL80c**Revised: Monday, July 03, 2006****IUT5 \ [DATA496] \ EZL80C Revision: 2**

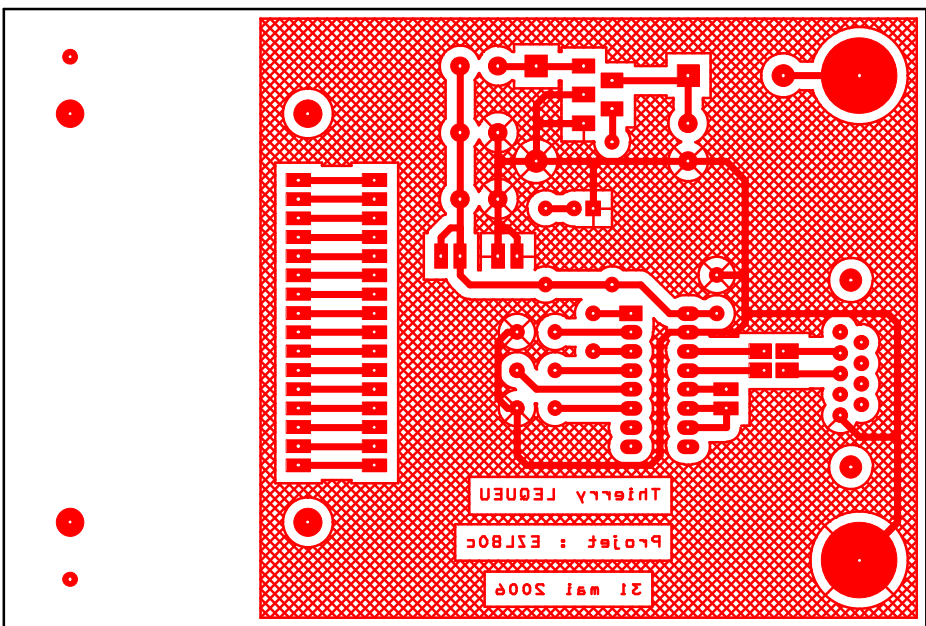
Référence	Qu.	Désignation	Fournisseur	Code Cde.	U.d.V.	Prix U.	Prix T.
B1	1	Embases de sécurité à terminaison fileté ROUGE	Radiospares	230-6344	1	2,760 €	2,760 €
B2	1	Embases de sécurité à terminaison fileté NOIRE	Radiospares	230-6350	1	2,760 €	2,760 €
C1	1	220 uF 63V	Radiospares	315-0984	5	3,700 €	0,740 €
C2,C3	2	120uF 25V	Radiospares	315-0546	1	1,170 €	2,340 €
C4,C5,C6,C7,C8	5	100nF	Radiospares	537-3044	10	1,400 €	0,700 €
DIV1	1	Modules EZL80C	Lextronic	EZL-80C	1	31,770 €	31,770 €
DIV2	1	RX/TX	Radiospares		1		0,000 €
D2,D1	2	11DQ04	Radiospares	395-2459	10	3,420 €	0,684 €
D3	1	LED verte 3mm 2mA	Radiospares	180-8451	10	3,530 €	0,353 €
JP1	1	Borniers 2 plot	Radiospares	131-8920	10	2,610 €	0,261 €
JP2	1	Borniers 2 plot	Radiospares	131-8920	10	2,610 €	0,261 €
JP3	1	DB9 femelle	Radiospares	239-5855	10	14,620 €	1,462 €
JP4	1	HEADER 16	Radiospares		1		0,000 €
JP5	1	HEADER 2	Radiospares		1		0,000 €
L1	1	68uH 2A	Radiospares	233-5207	5	3,670 €	0,734 €
R1	1	650	IUT GEII		100	1,000 €	0,010 €
U1	1	LM2595T3.3	Farnell	949-4340	1	3,330 €	3,330 €
U2	1	MAX3232	Radiospares	540-5359	1	1,830 €	1,830 €
VIS1,VIS2	2	Visserie M2	IUT GEII		1	0,100 €	0,200 €
Divers	90	Circuit imprimé SF 105x85 mm	Radiospares	159-6091	600	34,710 €	5,207 €

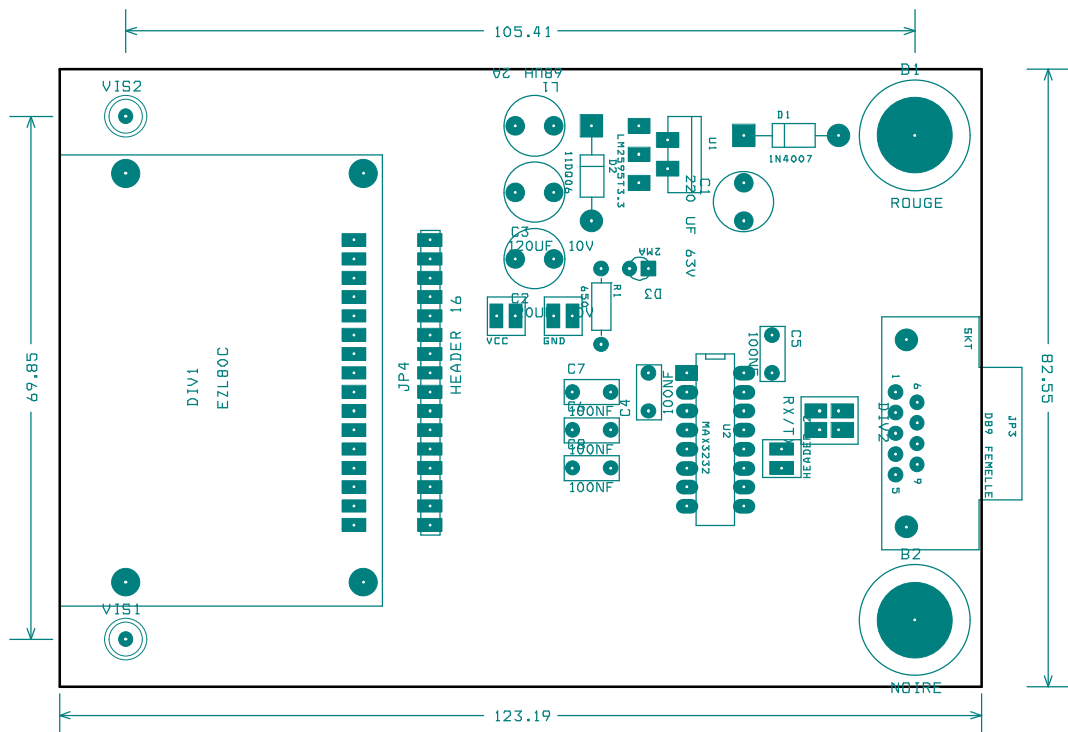
TOTAL H.T. :	55,40 €
dont TVA : 19,60%	10,86 €
TOTAL T.T.C. :	66,26 €

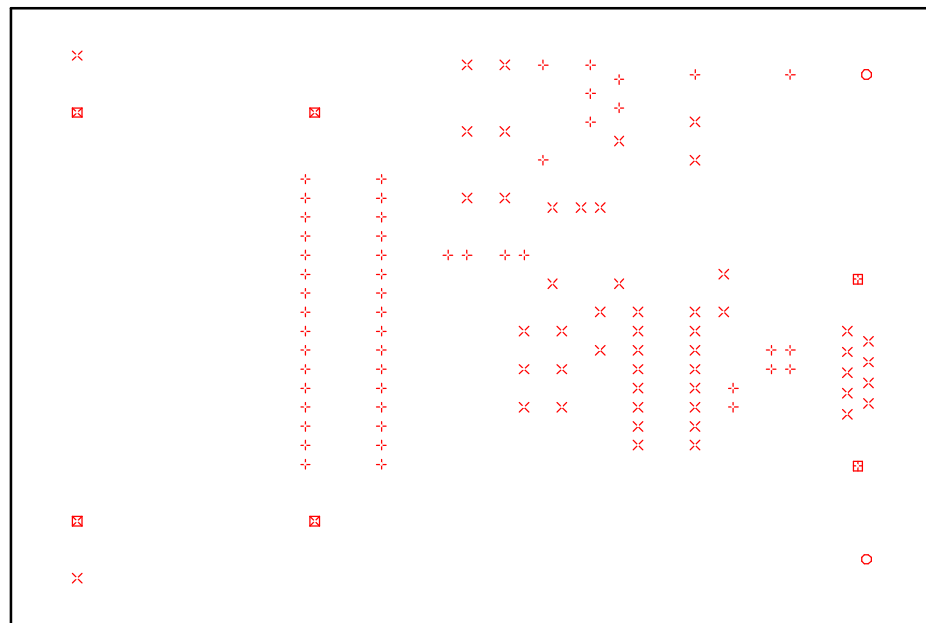


Auteur : Thierry LEQUEU		
Title Convertisseur RS232 / WIFI avec le module EZL80c		
Size A	Document Number IUT5 \ [[DATA496]] \ EZL80C	Rev 2
Date:	Saturday, June 03, 2006	Sheet 1 of 1



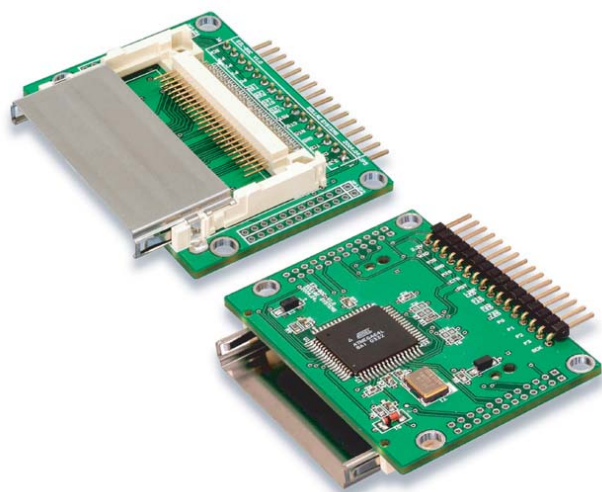






DRILL CHART				
SYM	DIAM	TOL	QTY	NOTE
x	0.787 mm		51	
+	0.991 mm		51	
⊠	1.194 mm		4	
⊞	3.048 mm		2	
○	4.191 mm		2	
TOTAL			110	

EZL-80c Summary Data Sheet

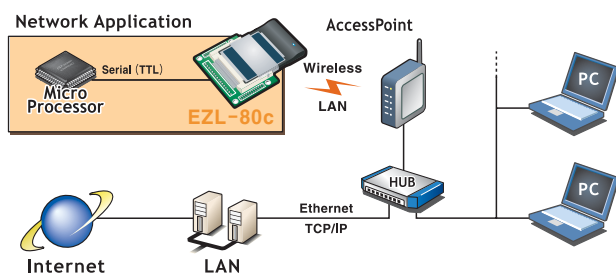


- small module TCP/IP converter
- CF card interface
- IEEE802.11b wireless LAN support
- 1 serial port (TTL level)
- small board size(60mm x 56mm x 10mm)
- infrastructure & ad-hoc support
- firmware downloadable via serial
- DHCP support
- easy configuration (ezConfig)
- AT command emulation support

Specifications

Power	Input Voltage	3.3 V
	Current	10mA (excluded CF card)
Dimension	60mm x 56mm x 10mm	
Weight	16g	
Interface	Serial	2.54mm pin header (male)
	Network	CF card interface
Serial	3.3V TTL level (1200bps ~ 115200bps)	
Network	IEEE802.11b wireless LAN (infrastructure/ad-hoc)	
Protocols	TCP, UDP, IP, ICMP, ARP, DHCP, WEP	
Communication Modes	T2S	TCP, Server mode
	COD	TCP, Client mode
	ATC	TCP, Server/Client (AT emulation)
	U2S	UDP
Utilities	ezConfig	configuration program utility
	wflash	firmware download utility
	ezterm	socket communication test utility

System Diagram



Applications

- remote monitoring systems
- remote metering systems
- remote fire fighting equipment systems
- air circulator remote control
- ATM systems
- health check systems
- security systems
- traffic display systems
- etc.

