

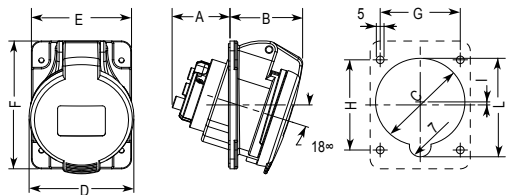
Socles de prises BT encastrés

Connexion à vis

Dimensions

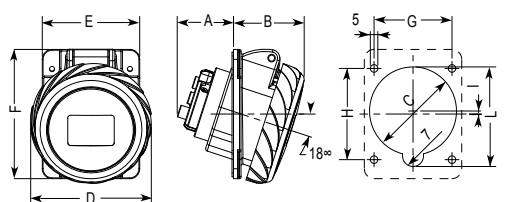
Socles de prises inclinées encastrés

IP 44

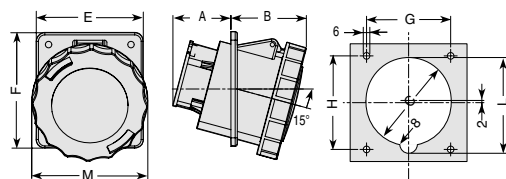


cote	16 A			32 A		
	2P+ \pm	3P+ \pm	3P+N+ \pm	2P+ \pm	3P+ \pm	3P+N+ \pm
A	38	38	37	48	48	48
B	46	48	50	53	53	55
C	54	58	70	70	70	75
D	60	68	76	82	82	89
E	65	65	90	90	90	90
F	85	85	100	100	100	100
G	52	52	77	77	77	77
H	60	60	85	85	85	85
I	2	2	7	3	3	2,5
L	59	65,5	75	76	76	83

IP 67



cote	16 A			32 A		
	2P+ \pm	3P+ \pm	3P+N+ \pm	2P+ \pm	3P+ \pm	3P+N+ \pm
A	38	38	37	48	48	48
B	46	48	50	54	54	57
C	54	58	70	70	70	75
D	73	81	89	95	95	102
E	65	65	90	90	90	90
F	85	85	100	100	100	100
G	52	52	77	77	77	77
H	60	60	85	85	85	85
I	2	2	7	3	3	2,5
L	59	65,5	75	76	76	83

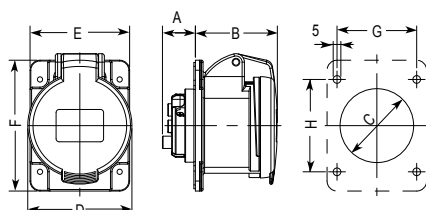


cote	63 A			125 A		
	2P+ \pm	3P+ \pm	3P+N+ \pm	2P+ \pm	3P+ \pm	3P+N+ \pm
A	56	56	56	76	76	76
B	73	73	73	90	90	90
C	82	82	82	96	96	96
E	100	100	100	110	110	110
F	107	107	107	114	114	114
G	77	77	77	90	90	90
H	85	85	85	90	90	90
L	90	90	90	102	102	102

M = 108 mm pour 63 A et 129 mm pour 125 A.

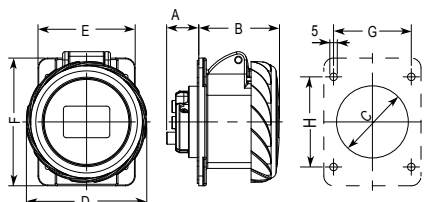
Socles de prises droites encastrés

IP 44



cote	16 A			32 A		
	2P+ \pm	3P+ \pm	3P+N+ \pm	2P+ \pm	3P+ \pm	3P+N+ \pm
A	22	22	22	28	28	28
B	54	54	54	63	63	64
C	44	48	54	58	58	65
D	60	68	76	82	82	98
E	65	65	90	90	90	90
F	85	85	100	100	100	100
G	52	52	77	77	77	77
H	60	60	85	85	85	85

IP 67



cote	16 A			32 A		
	2P+ \pm	3P+ \pm	3P+N+ \pm	2P+ \pm	3P+ \pm	3P+N+ \pm
A	22	22	22	28	28	28
B	54	54	54	63	63	64
C	44	48	54	58	58	65
D	73	81	89	95	95	102
E	65	65	90	90	90	90
F	85	85	100	100	100	100
G	52	52	77	77	77	77
H	60	60	85	85	85	85