

2.9 Interface de transmission RS232

Projet : IUT5

Info : [DIV518]

Révision: 1 du 27 février 2012

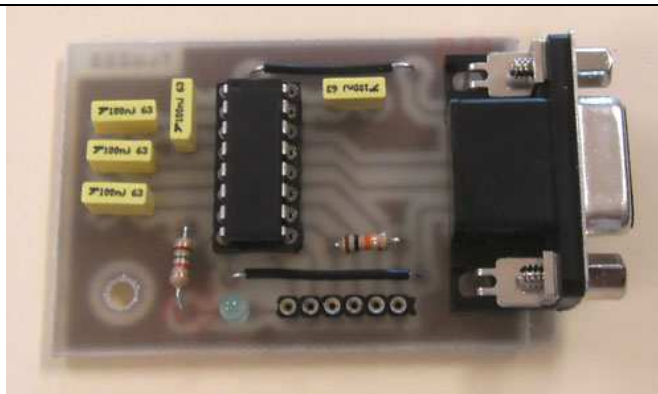


Figure 2.12. Vue de la carte électronique (images-maquettes\CON232-13.jpg).

2.9.1 Désignation des composants

Tableau 2.10. Liste des composants (projets-iut5.xls / CON232).

No	Quantité	Référence	Désignation	Empreinte
1	5	C1, C2, C3, C4, C5	100nF	CK06
2	1	C6	10uF 6.3V	RADIAL06
3	1	D1	3mm verte	LED03
4	1	JP1	RS232	DSUB-09-F
5	1	JP2	IN-OUT	06PL1
6	1	R1	1.5k	RC04L
7	1	U1	MAX3232	16DIP300L
8	4	VIS1, VIS2, VIS3, VIS4	VISSERIE	M3L

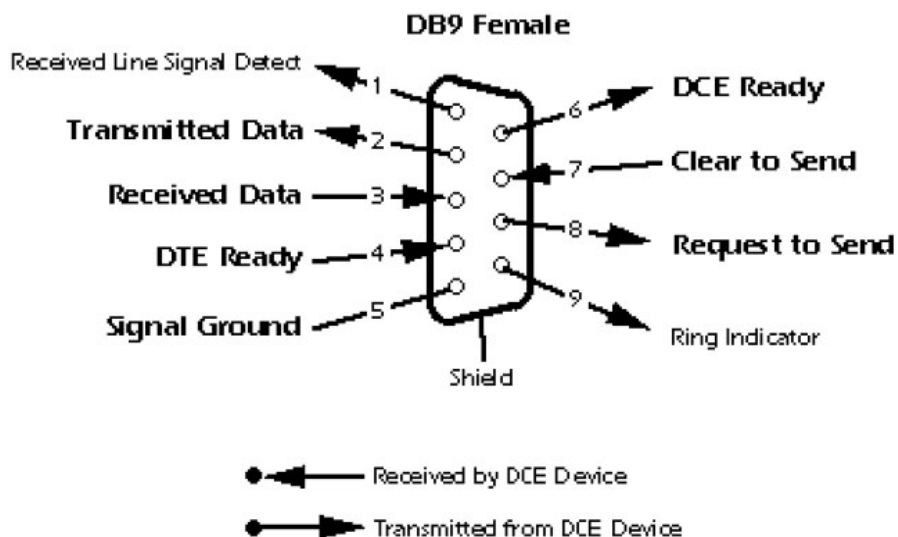
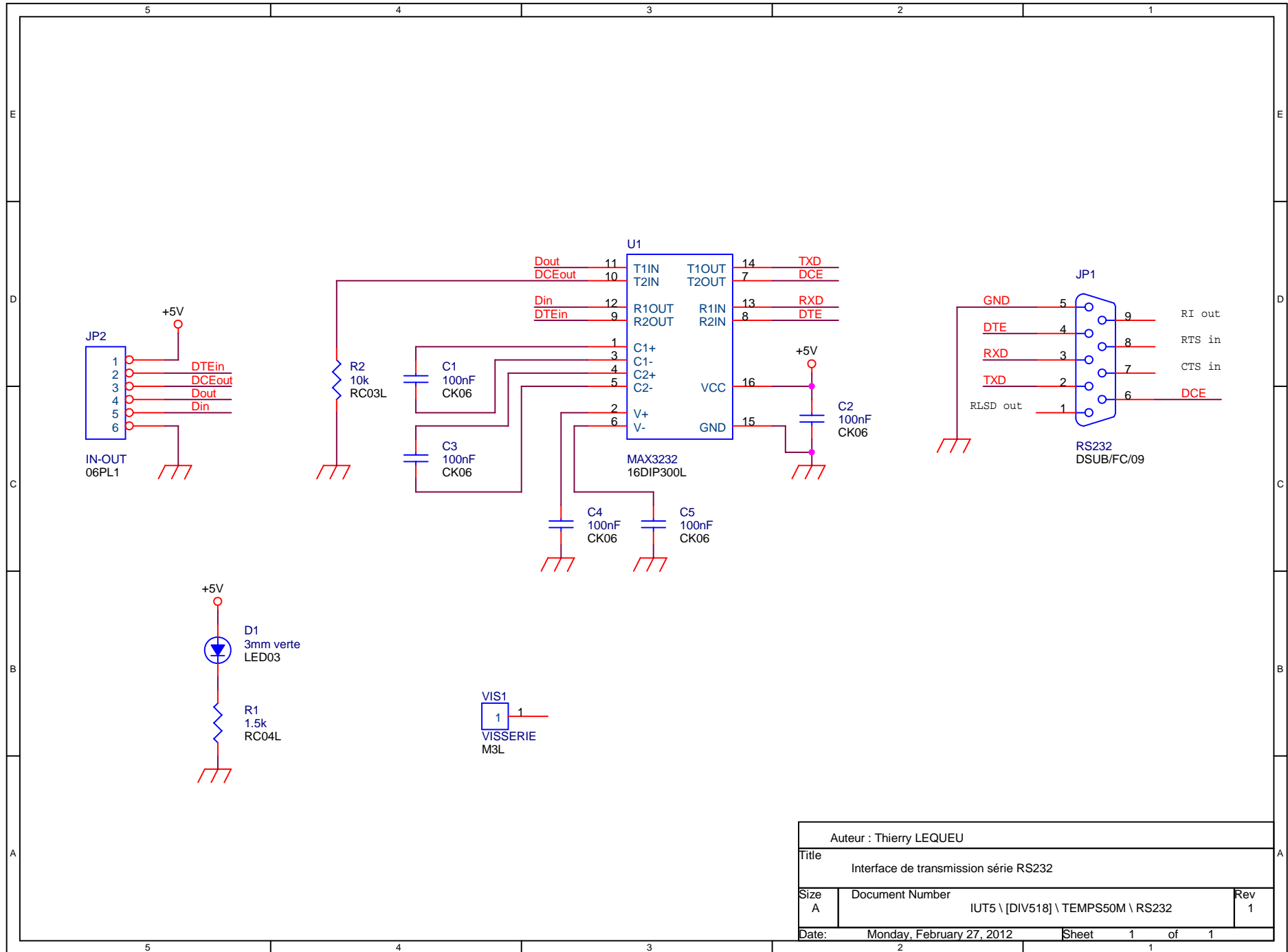
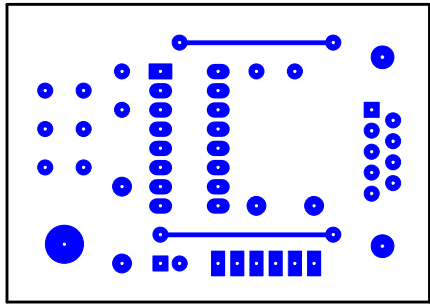


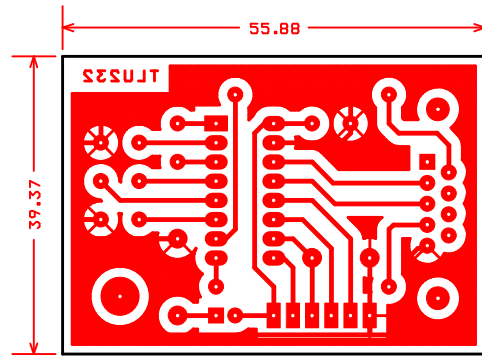
Figure 2.13. Branchement de la prise DB9 femelle.



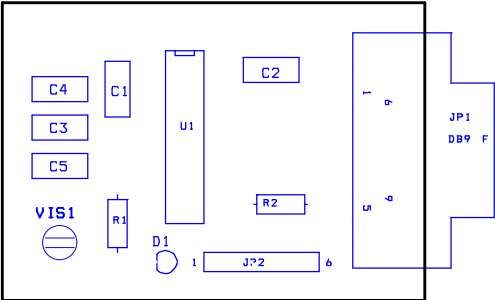
Auteur : Thierry LEQUEU		
Title Interface de transmission série RS232		
Size A	Document Number IUT5 \ [DIV518] \ TEMPS50M \ RS232	Rev 1
Date: Monday, February 27, 2012	Sheet 1	of 1

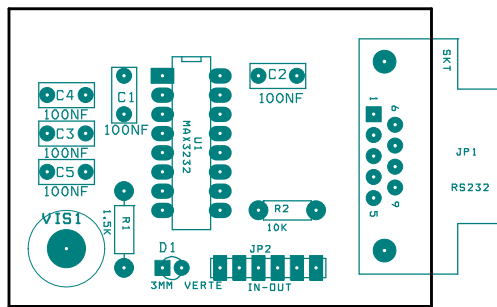


Face TOP

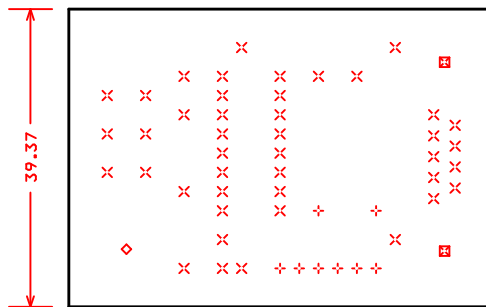


Face BOT
Thierry LEBUEN
Projet : CON323
Le 27 février 2012





FACE AST



FACE DRD

DRILL CHART				
SYM	DIAM	TOL	QTY	NOTE
x	0.787 mm		43	
+	0.991 mm		8	
◇	1.499 mm		1	
⊠	3.048 mm		2	
TOTAL			54	